

**JOHNSON COUNTY  
MIDDLE SCHOOL  
STATE OF THE SCHOOL  
2020-2021**



# JCMS LEADERSHIP

CHRISTOPHER WATKINS, ED.D., PRINCIPAL

REID BETHEA, M.ED., ASSISTANT PRINCIPAL

DEXTER MACK, ED.S., ASSISTANT PRINCIPAL

NICHOLE SHEPARD, ED.S., SCHOOL COUNSELOR



<b>African American</b>	<b>Asian</b>	<b>White</b>	<b>Hispanic</b>	<b>American Indian</b>	<b>Multi-Racial</b>	<b>Total Enrollment</b>
<b>F: 64</b>	<b>F: 0</b>	<b>F: 58</b>	<b>F: 7</b>	<b>F: 0</b>	<b>F: 3</b>	<b>F: 132</b>
<b>M: 54</b>	<b>M: 0</b>	<b>M: 66</b>	<b>M: 3</b>	<b>M: 0</b>	<b>M: 4</b>	<b>M:127</b>
<b>T: 118</b>	<b>T: 0</b>	<b>T: 124</b>	<b>T: 10</b>	<b>T: 0</b>	<b>T: 7</b>	<b>T: 259</b>





<b>Grade Level</b>	<b>Total Enrollment</b>	<b>Free/Reduced Student Totals</b>	<b>% of Free/Reduced Students</b>
6-8	263	149	56.65%

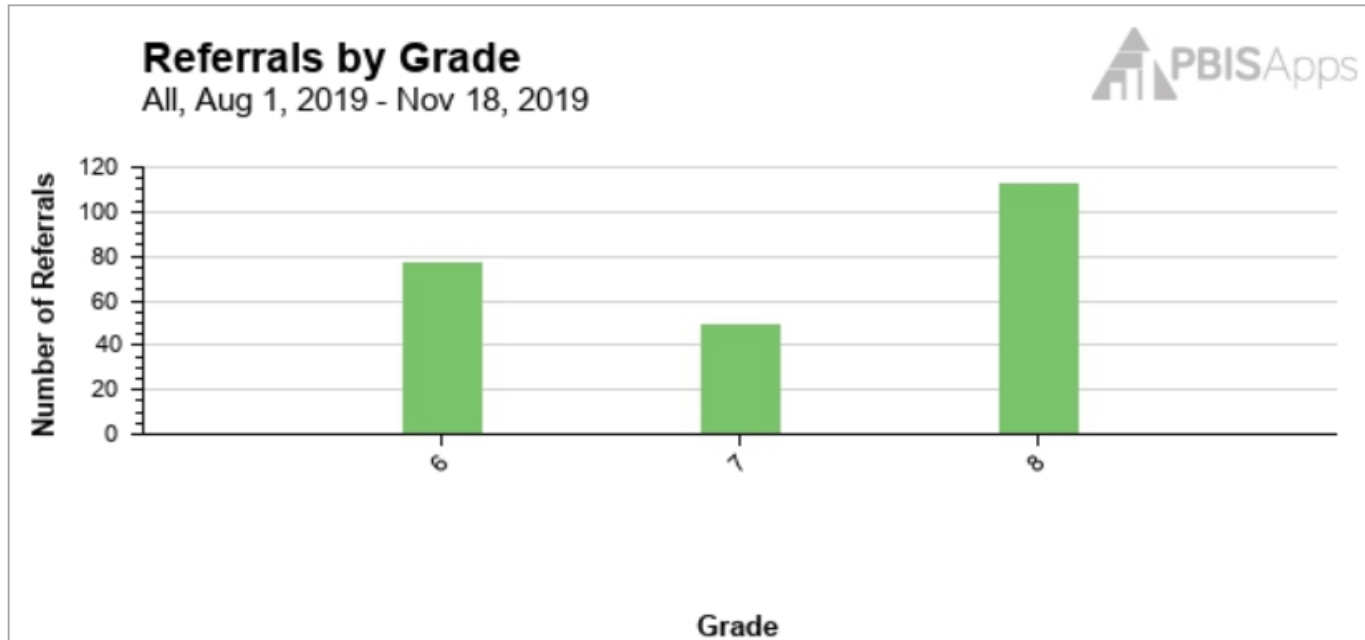
# JCMS SCHOOL IMPROVEMENT GOALS

1. BY THE END OF THE SCHOOL YEAR 2017-2021, THERE WILL BE A 3% INCREASE OF ALL MIDDLE SCHOOL STUDENTS PERFORMING AT OR ABOVE PROFICIENT ON THE READING INVENTORY (RI).
2. BY THE END OF THE SCHOOL YEAR 2017-2021, 3% OF ALL STUDENTS WILL INCREASE THEIR PERFORMANCE LEVEL ON THE EOG.
3. DECREASE THE TOTAL NUMBER OF DAYS SPENT IN ISS/OSS FOR THE AFRICAN AMERICAN SUBGROUP BY 3% BY THE END OF THE SCHOOL YEAR 2020-2021.



Referrals By Grade  
8/1/19 - 11/18/19

Referral Type: All Referrals  
Show Values on the Graph: No



**Data Table**

Grade	Frequency	Proportion
6	77	32.35%
7	49	20.59%
8	112	47.06%
<b>Totals:</b>	<b>238</b>	<b>100%</b>



## JCMS CCRPI DATA

2019 - 78.6

2018 - 72.9

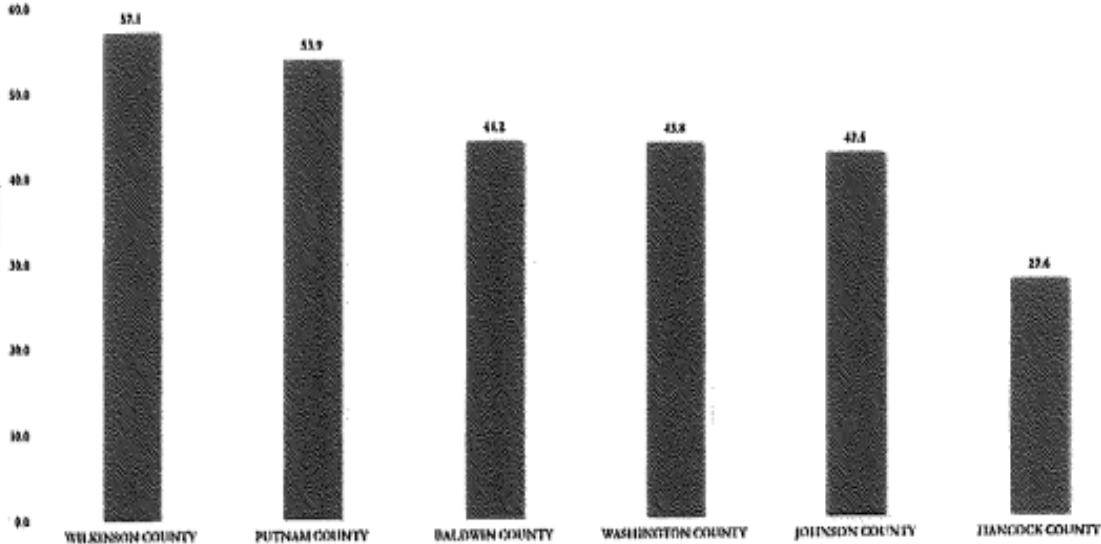
2017 - 68.4

2016 - 68.8

2015 - 69.3

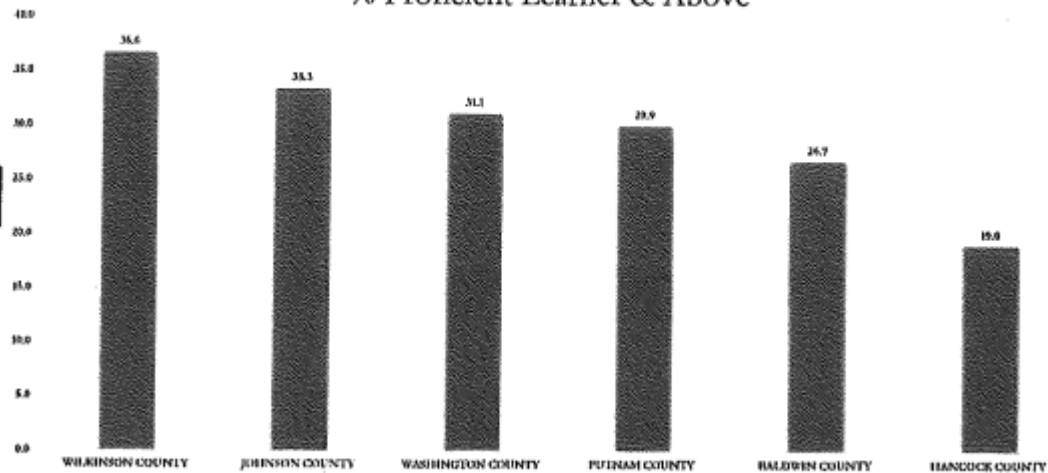


6th grade FY19 Reading  
% Grade Level or Above

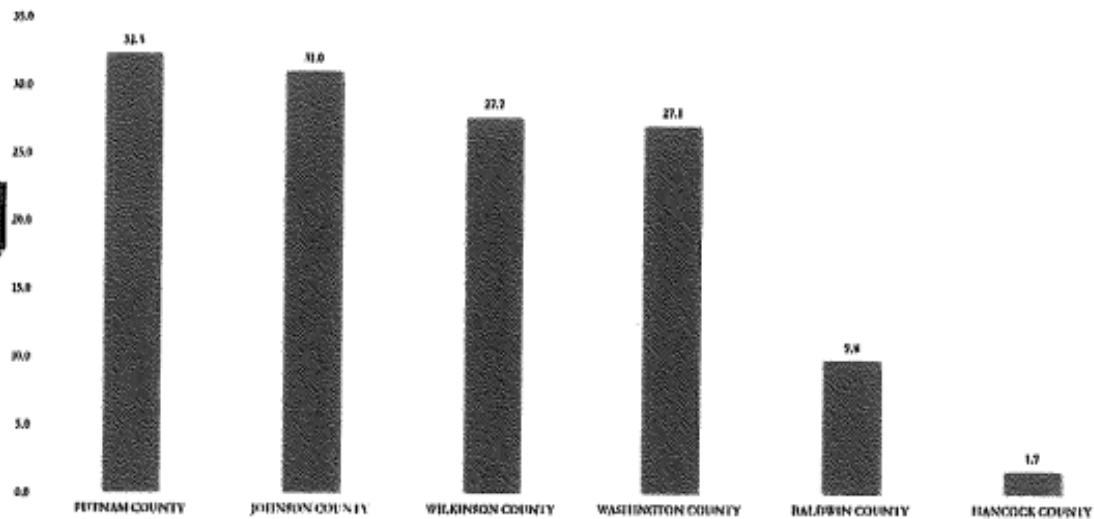




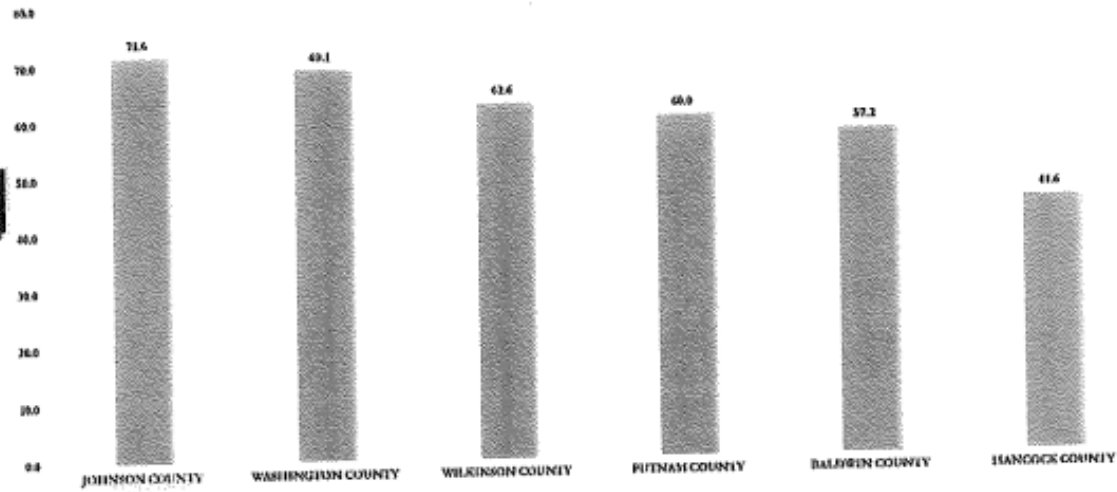
6th grade FY19 ELA  
% Proficient Learner & Above



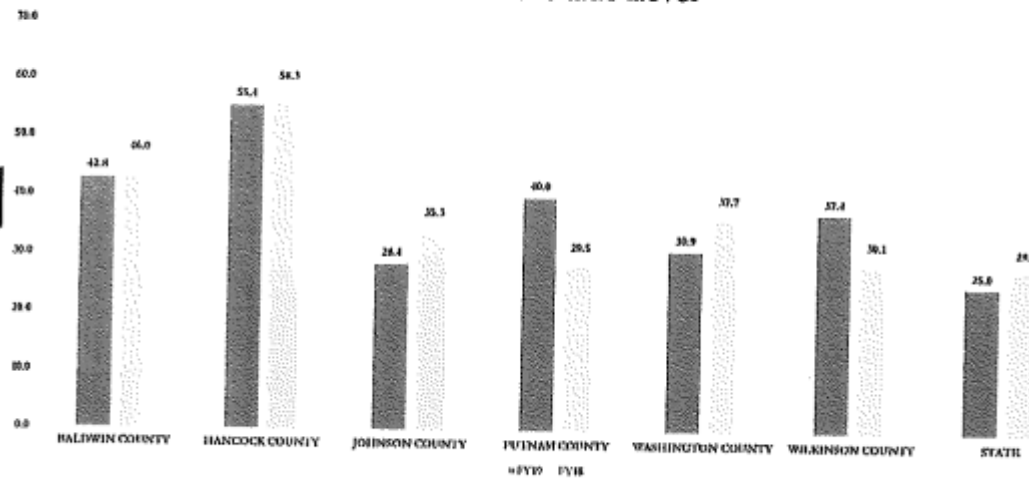
6th grade FY19 Math  
% Proficient Learner & Above



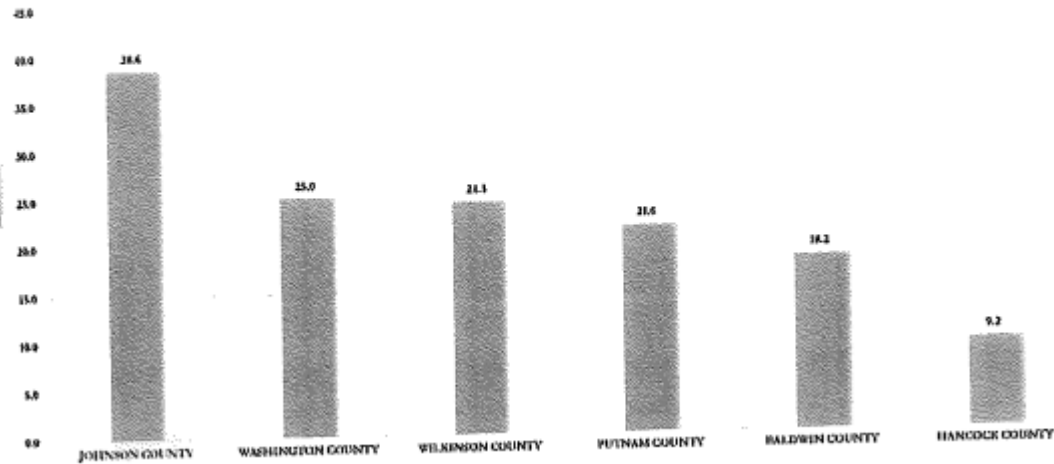
7th grade FY19 Reading  
% Grade Level or Above

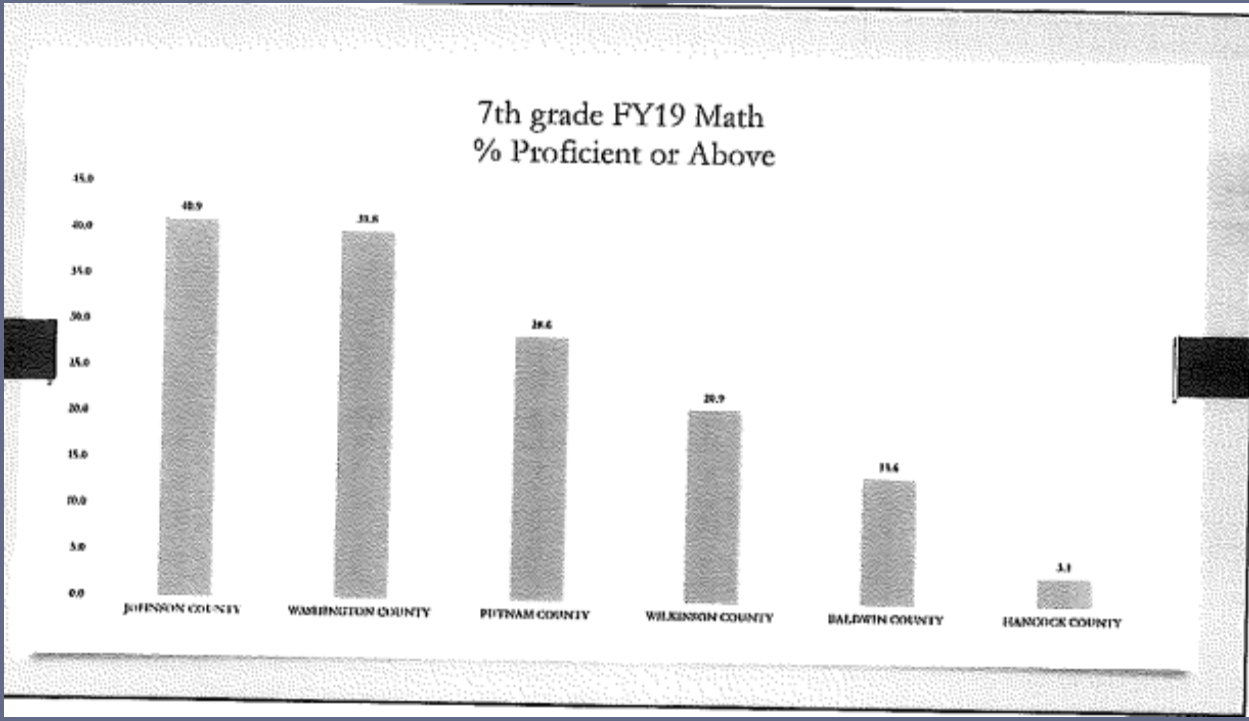


### 7th grade Reading % Below Grade Level

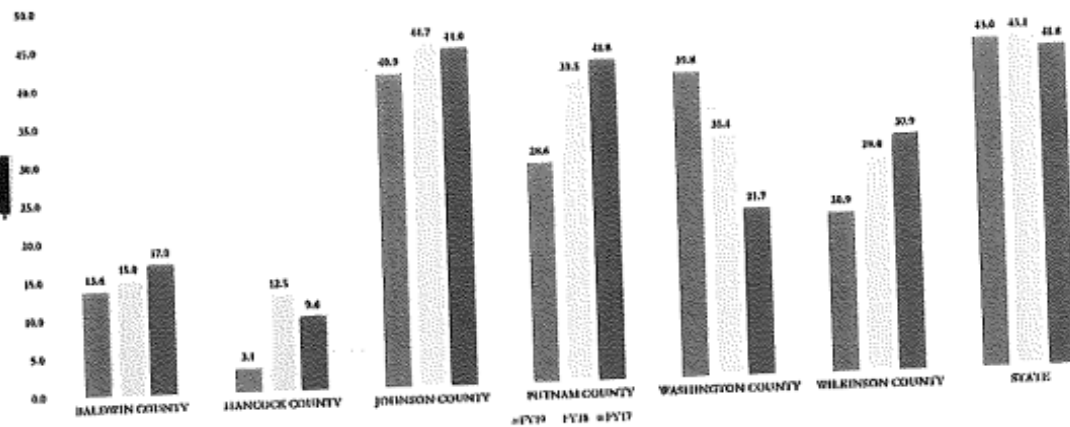


7th grade FY19 ELA  
% Proficient or Above

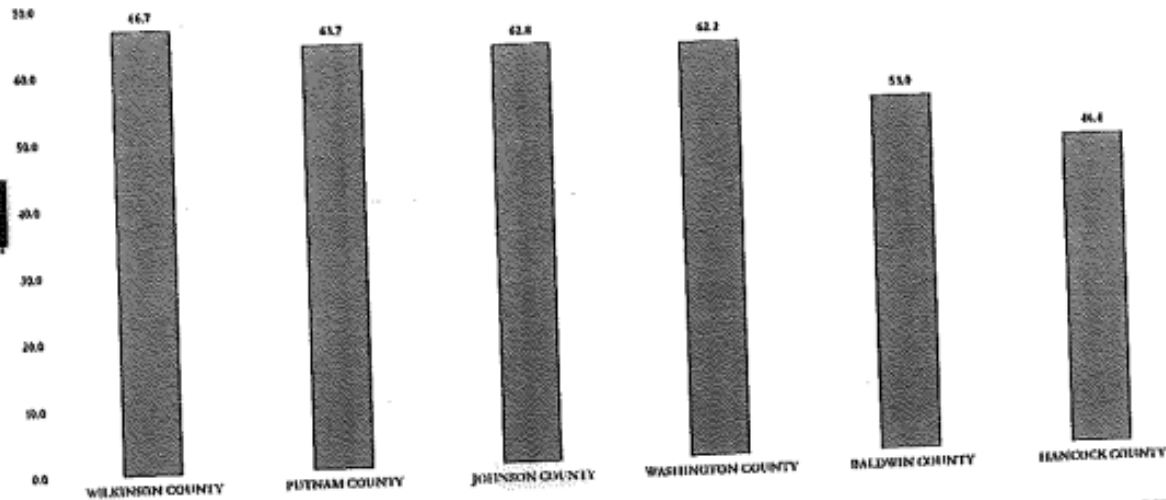




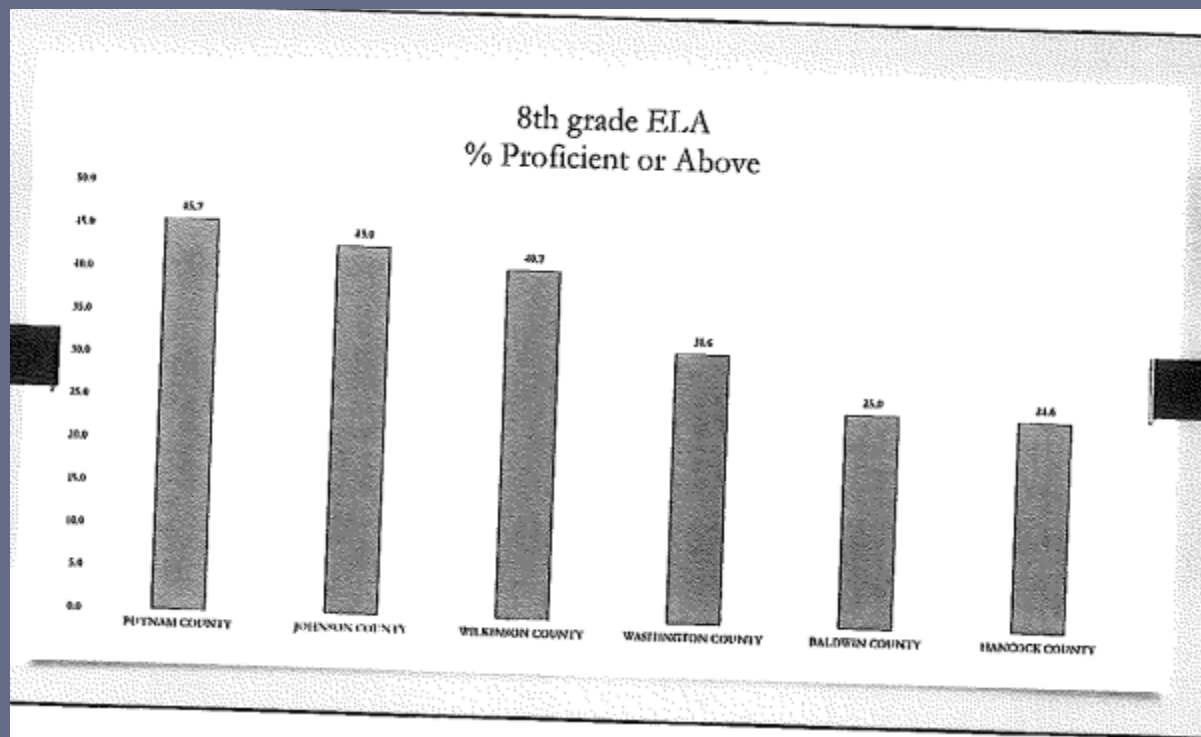
### 7th grade Math % Proficient Learner & Above

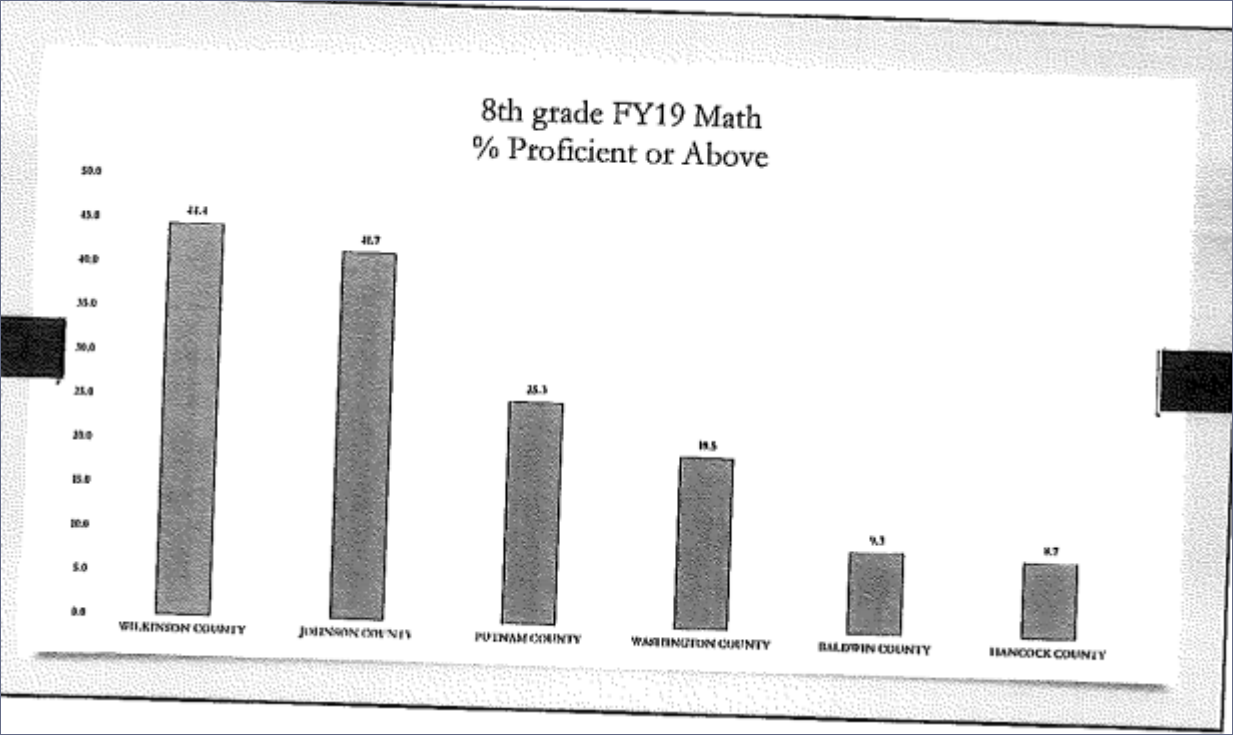


8th grade FY19 Reading  
% Grade Level or Above

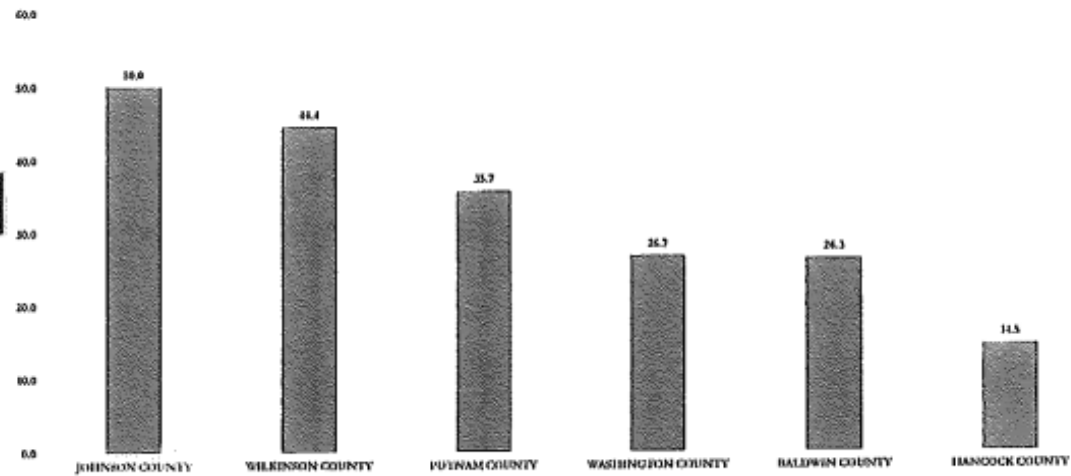




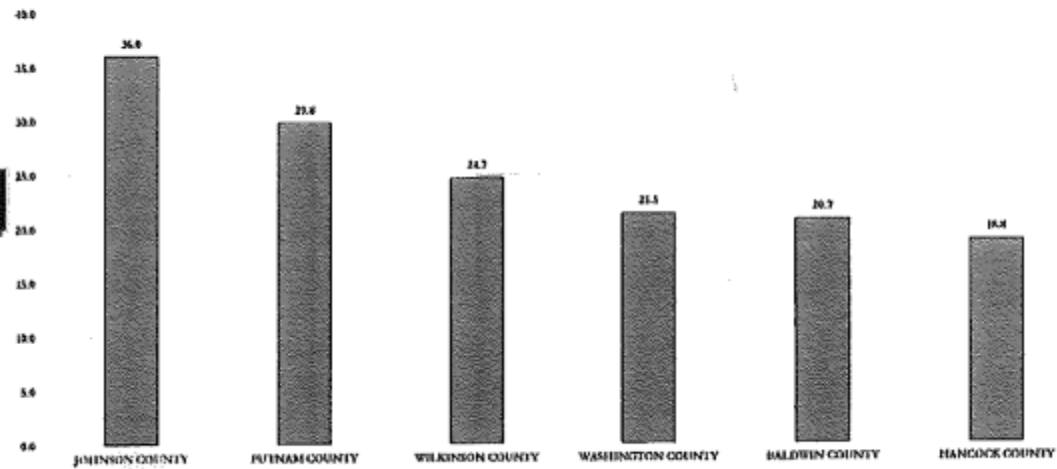




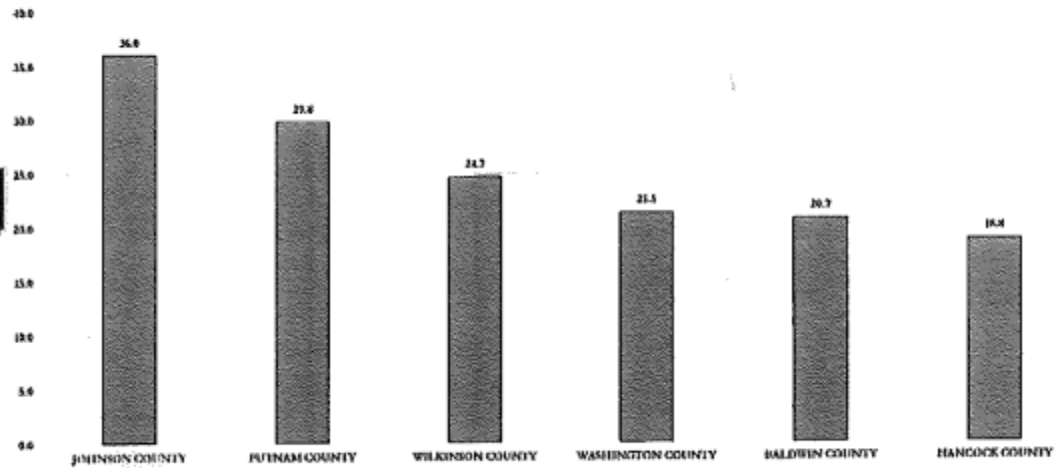
8th grade FY19 Science  
% Developing Learner & Above



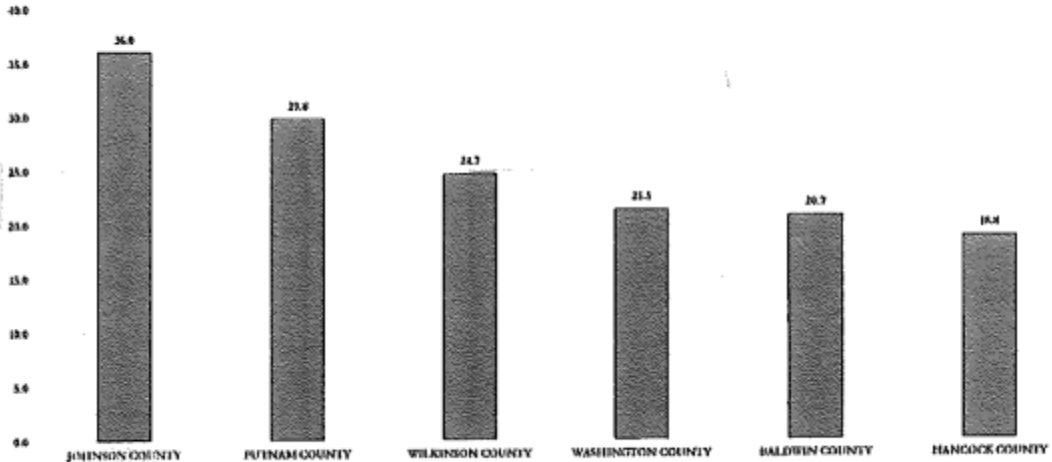
8th grade FY Social Studies  
% Proficient Learner & Above



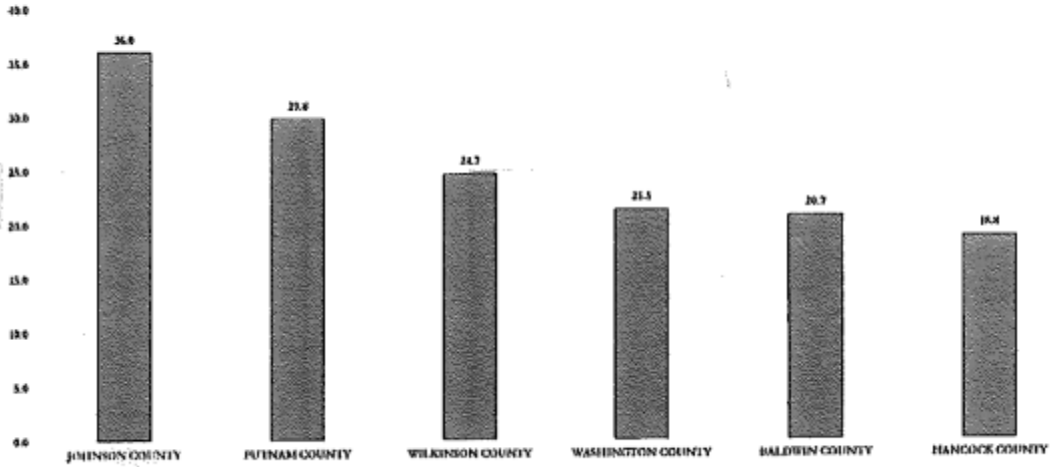
8th grade FY Social Studies  
% Proficient Learner & Above



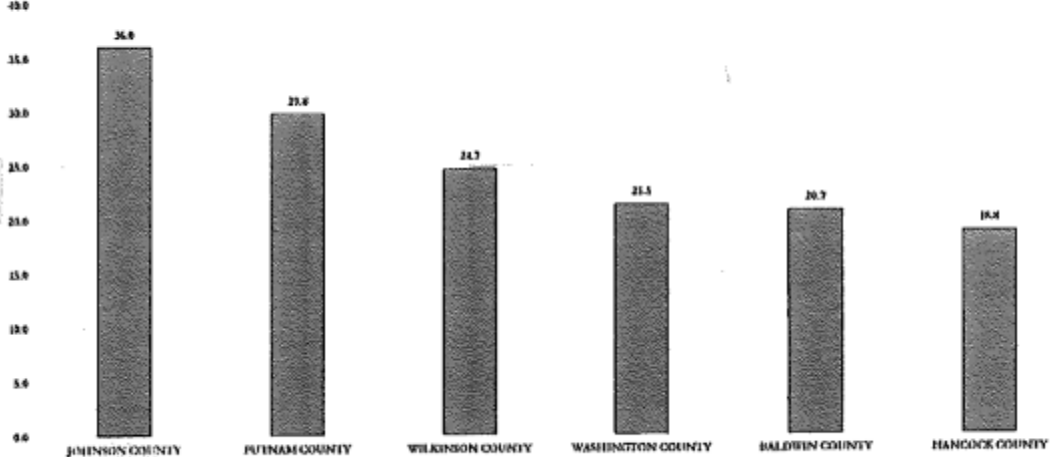
8th grade FY Social Studies  
% Proficient Learner & Above



8th grade FY Social Studies  
% Proficient Learner & Above

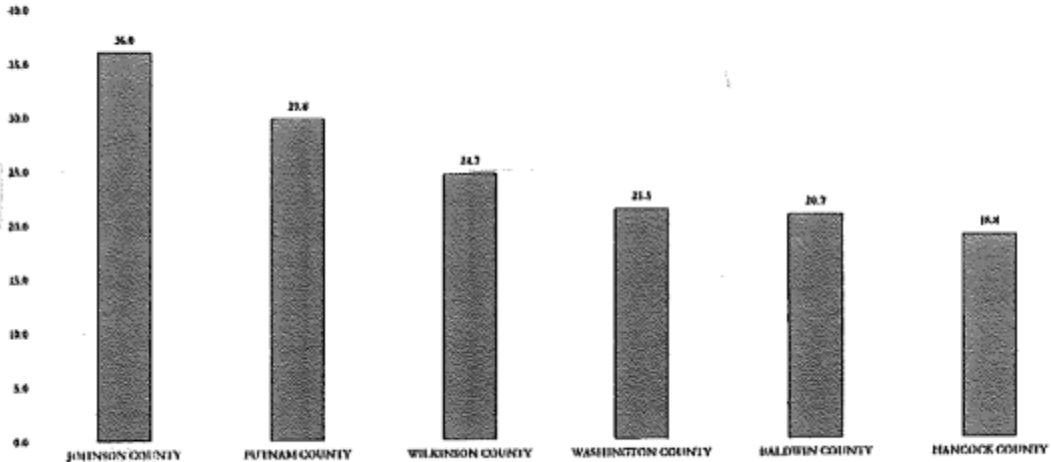


8th grade FY Social Studies  
% Proficient Learner & Above





8th grade FY Social Studies  
% Proficient Learner & Above



# MS SCHOOL CLIMATE RATING – 4 STARS



# JCMS NEXT STEPS

- . LITERACY BLOCK IN 6<sup>TH</sup> & 8<sup>TH</sup> GRADES
- . INCREASE USE OF ACADEMIC VOCABULARY
- . PARTICIPATE IN STEAMIFY STEM COMPETITION
- . RECRUIT/RETAIN PQ CERTIFIED TEACHER
- . SIX MINUTES SOLUTION TO INCREASE FLUENCY
- . IMPLEMENT MTSS WITH FIDELITY
- . CONTINUE PBIS WITH INCENTIVES
- . GLISI INITIATIVES

